



WWW.RIPLEYCOUNTYTOURISM.COM



Milan '54 Championship Team



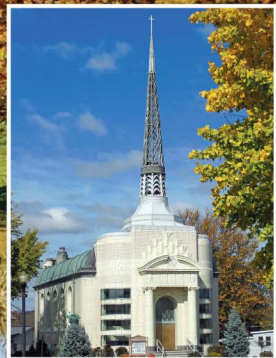
Versailles State Park



Ripley County Courthouse



**National Muzzle Loading
Rifle Association**



Tyson Temple UMC



Lil' Charlie's Restaurant & Brewery



Weberding's Carving Shop

MILAN '54 HOOSIERS MUSEUM

201 W. CARR STREET, MILAN

(812) 654-2772 • MILAN54.ORG The history of basketball in Indiana wouldn't be complete without the story of the small Milan High School's State Basketball Championship over the much larger Muncie Central in 1954. People came from many miles away to congratulate the team that year, and now they come from all over the world to hear the story. In 1986 the movie "Hoosiers", inspired by the team, hit the large screen and has often been named the best sports story ever. The museum houses the largest collection of "Hoosiers" memorabilia.



VERSAILLES STATE PARK

1387 E. U.S. 50, VERSAILLES • **(812) 689-6424**

IN.GOV/DNR/PARKLAKE/2963.HTM Mountain biking, hiking, boating, swimming, camping, fishing, and picnicking are just some of the popular activities at Versailles State Park, the second largest park in Indiana. The park, beautiful with its rolling hills and thick forests, is a wonderful place to spend time. Take a challenging mountain bicycle ride on one of six trails, or hike on one of three trails. Five horse trails lead horse owners through the forest. Steeped in history, the park was home to many Civilian Conservation Corps during the mid-1930s. Many of the buildings and trails they built are still being used today. A statue honoring Indiana's CCC men is located at the park office.



RIPLEY COUNTY COURTHOUSE

115 N. MAIN STREET, VERSAILLES • **RIPLEYCOUNTY.COM** Built in 1863, the Courthouse houses the judicial offices for the county. In 2012 county officials built a new annex building to house the other county offices. In the main first-floor hallway of the courthouse is the Ripley County History Tree. The leaves of the tree signify important events or people throughout the county's history. The Courthouse lawn displays a beautiful black granite memorial to those from the county who have served our country.

TYSON TEMPLE UMC

324 W. TYSON STREET, VERSAILLES • **(812) 689-6976 • M-F 9-12 • TYSONUMC.ORG**

A unique Art Deco church, Tyson Temple is on the National Register of Historic Places. Completed in 1937 by Jim Tyson, co-founder of the Walgreens Drug Store, the church was created from materials purchased all over the world, with no nails.

NATIONAL MUZZLE LOADING RIFLE ASSOCIATION

6219 EAST STATE ROAD 62, FRIENDSHIP (812) 667-5131 • **NMLRA.ORG**

Rifle enthusiasts come from all over the world twice a year for competitions in the Friendship Valley (known as the Friendship Shoots). They also host a youth, family, and other shoots. The Friendship Valley is also home to flea markets during the spring and fall Friendship Shoots. Check our events schedule for dates.

LIL' CHARLIE'S RESTAURANT AND BREWERY

504 E. PEARL STREET, BATESVILLE • **(812) 934-6392 • LILCHARLIES.COM**

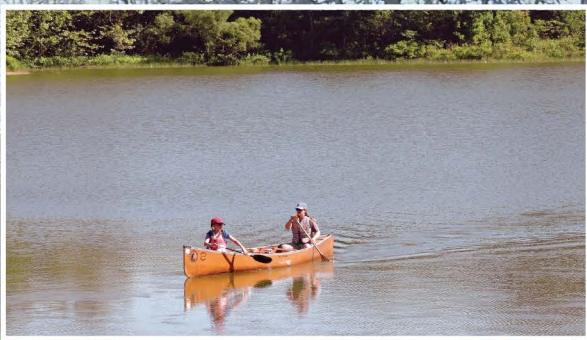
Things are always hopping at Lil' Charlie's where they make their own Microbrews; serve over 55 other beers; and lunch and dinner are always tasty.

WEBERDING'S CARVING SHOP

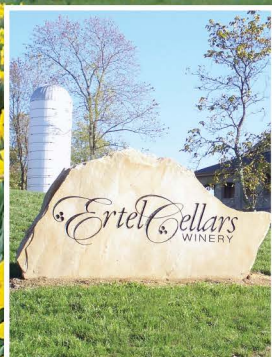
1230 STATE ROAD 46 EAST, BATESVILLE

(812) 934-3710 • WEBERDING.COM A part of the Batesville landscape since 1942, the Master Carvers in this historic business have been creating custom-made furniture, cabinetry, fire-place mantels, and more for customers all over the world. They are also known for refurbishing statues, tabernacles, candlesticks and more religious items. They demonstrate their skills, and have a gift shop.





Big Oaks National Wildlife Refuge



Ertel Cellars Winery & Bistro



The Gibson Theatre



The Damm Theatre



Osgood Historical Society

BIG OAKS NATIONAL WILDLIFE REFUGE

1661 WEST JPG NIBLO RD., MADISON

(812) 273-0783 • FWS.GOV/REFUGE/BIG_OAKS/

Established in 2000, from what was formerly the Jefferson Proving Ground, Big Oaks covers approximately 50,000 acres of gently rolling hills to flat lands. The majority of the Refuge is in Ripley County, however, the entrance gate is in Jefferson County. Activities at the Refuge include fishing and boating at Old Timbers Lake, hunting, wildlife viewing, environmental education, and more. Refuge open days and hours are limited, and permits are required. Call for details.



ERTEL CELLARS WINERY AND BISTRO

3794 EAST COUNTY RD. 1100 NORTH, BATESVILLE

(812) 933-1500 • ERTCELLARSWINERY.COM

Much more than a winery, Ertel's is a place to relax and fine dine in the countryside. Watch the Vintner at work and enjoy complimentary wine tastings.



HISTORIC THEATRES

BEL-AIR DRIVE-IN THEATER

337 N. U.S. HWY 421, VERSAILLES • (812) 689-5525

Iconic drive-in movie theater. The Bel-Air Drive-In opened for business in 1952. Open in the Summer.



THE DAMM THEATRE

117 N. BUCKEYE STREET, OSGOOD

(812) 689-DAMM (3266)

The Damm family start a theatre in this location in 1922. The building was remodeled and opened again in June 2008.



THE GIBSON THEATRE

107 N. MAIN STREET, BATESVILLE • (812) 934-3404

Dr. C.W. Gibson built this theatre in 1921, first for theatrical plays and later "talking pictures".

HISTORICAL MUSEUMS

SUNMAN HISTORICAL MUSEUM

604 N MERIDIAN ST., SUNMAN, IN.

Located in the Sunman Town Hall. Open M-F 8am-4pm (closed 12-1 for lunch), (812) 623-2066.

BATESVILLE AREA HISTORICAL SOCIETY

15 W GEORGE ST., BATESVILLE, IN • (812) 932-0999

BATESVILLEAREAHISTORICALSOCIETY.ORG

Open March-December THU & FRI - 10:00 - 2:00 SAT - 9 - Noon.



RIPLEY COUNTY HISTORICAL SOCIETY

125 S WASHINGTON ST, VERSAILLES, IN 47042

(812) 689-3031 • RCHSLIB.ORG Open M-F, 1-4pm.

OSGOOD HISTORICAL MUSEUM

128 S BUCKEYE ST, OSGOOD, IN 47037 • (812) 689-1876

Open Fri-Sat 2pm-6pm, Sun noon-4pm.



FOR UPDATED INFO: WWW.RIPLEYCOUNTYTOURISM.COM

All information was current at press time, however due to ever-changing Covid-19 concerns, we recommend you check before you travel.

RIPLEY COUNTY EVENTS



JANUARY

1/1 - 2/28 BATESVILLE SKY - WINTER WONDER

This 200 foot lighted tunnel is a unique art installation located at 121 Shopping Village in downtown Batesville, Indiana. Visit now through February 28th.

Facebook.com/BatesvilleSky or baacindiana.org.



FEBRUARY

1-28 BATESVILLE SKY - WINTER WONDER

121 Shopping Village in downtown Batesville. Visit now through February 28th. Facebook.com/BatesvilleSky or baacindiana.org.

17-21 ANNUAL CHERRY THING-A-LING DAYS

Schmidt Family Bakery Cherry Thing-a-lings™ on sale.

Thur.-Mon. 4am-5pm in the Batesville Shopping Village; 812-934-4501, schmidtbakery.com.



19 PARTY PLACE BRIDAL EXPO

Join us along with southeastern Indiana's top wedding vendors for fashions, trends, tastings, ideas, door prizes, complimentary mimosas and more. 10am-3pm.

No adm fee. Contact Mary Ellen at 513-519-9936;

info@romwebermarketplace.com;

romwebermarketplace.com/special_events.



MARCH

MARCH 1-MAY 7 RIPLEY COUNTY PARK HOP

Participate in a scavenger hunt as you visit 14 parks in Ripley County. Enjoy story walks and other activities throughout the event. Collect prizes at the Park Hop Finale at Versailles State Park on May 7th. More information at ripleycountyreads.org.



APRIL

APRIL - MID-JUNE BATESVILLE SKY - COLOR RAIN

What if the rain that fell from the sky was colorful? This artistic installation, which moves with the wind and lets itself be carried through the air, is mesmerizing to see.

121 Shopping Village in downtown Batesville. April through mid-June; Facebook.com/BatesvilleSky or baacindiana.org.



9 SE IN F.A.R.M. CLUB'S SWAP MEET

Farm, lawn & garden, workshop, antiques, collectables, auto & truck items, crafts, farm and orchard vendors and more! Cleaning up around your property, or need room in your garage or barn? \$3 per person to buy, sell, or trade; kids under 12 free. Ripley County Fairgrounds, Osgood. Chris Schmaltz 812-654-3949, ihcfan@hotmail.com, farmclubonline.com.



MAY

APRIL – MID-JUNE BATESVILLE SKY – COLOR RAIN

121 Shopping Village in downtown Batesville. Facebook.com/BatesvilleSky or baacindiana.org.

6-8 VOGT FARM HANGING BASKET FESTIVAL

Mother's Day at Vogt's Farm Hanging Basket Festival, south of Batesville on SR129. 11am-7pm. No adm chg. Jerry Vogt. 812-934-4627, facebook.com/vogtfarmbatesville.



7 VERSAILLES STATE PARK – WELCOME BACK WEEKEND

Visit Versailles State Park for a scenic hike with the possibility of enjoying some spring wildflowers in Indiana. Contact the park office for details at 812-689-6424.

7 RIPLEY COUNTY PARK HOP

Participate in a scavenger hunt as you visit 14 parks in Ripley County March 1-May 7. Enjoy story walks and other activities throughout the event. Attend the Park Hop Finale at Versailles State Park on May 7th to collect prizes. More information at ripleycountyreads.org.

21 ART IN NATURE COMMUNITY ART SHOW AND

ARTISAN DEMONSTRATIONS Visit Versailles State Park for artisan demonstrations in basketmaking with the Basketman, hand-made moccasins, blacksmithing, and stain glass. Hands-on demonstrations with the Southeastern Indiana Wood Turners, pottery, and more. 812-689-7431; ripleycountytourism@gmail.com

JUNE

APRIL – MID-JUNE BATESVILLE SKY – COLOR RAIN

121 Shopping Village in downtown Batesville. Facebook.com/BatesvilleSky or baacindiana.org.

10-19 FRIENDSHIP FLEA MARKETS

Almost 500 vendors with new, used, antiques and collectibles and lots of specialty foods. Hours vary. Friendship flea markets and campgrounds: Hudson's Old Mill Campground 812-667-5322. Facebook.com/HudsonsOldMill; or Friendship Flea Market 859-341-9188 www.friendshipfleamarket.com

11-19 NMLRA NATIONAL SPRING SHOOT

Muzzleloading rifle competition, living history encampment, events, lectures, classes, youth activities, and rifle museum in Friendship. Hours vary. Parking & adm chg. National Muzzle Loading Rifle Association 812-667-5131; nmlra.org/nmlraevents.





JUNE CONT.

23-25 26TH ANNUAL ANTIQUE MACHINERY SHOW

SE Indiana FARM Club event featuring J.I. Case, Orphan, & Vintage Garden Tractors & Economy Engines. Hit-n-miss engines, Oilfield engines, blacksmith, threshing, vintage tractors of all makes & years, hay press, demonstrations, consignment barn, quilt show & more. Battle of the Bluegrass Pulling Series Fri. & Sat. Ripley County Fairgrounds, Osgood. \$3 adm chg. Parking and grandstand adm chg. Chuck & Sherri Heck 812-926-3654, farmclubonline.com.

JUNE 24-25 RIPLEY COUNTY PLEIN AIR PAINT OUT

Plein Air painters of all levels compete for \$3000 in awards at the first Plein Air Art in the Park ending with an open to the public art show of completed works at the Versailles State Park. 812-689-7431; ripleycountytourism@gmail.com

25 VERSAILLES COURTHOUSE DAY

Main Street Versailles 5K walk/run registration 7:15 am. (812) 565-8018, mainstreetversailles@gmail.com. Lions Club Chicken BBQ 11am-4 pm. Wayne Asche 812-689-4538.

JULY

JULY-SEPTEMBER BATESVILLE SKY - UMBRELLA SKY BATESVILLE

The Batesville Area Arts Council will cool downtown Batesville from July through September with this unique art installation located at 121 Shopping Village in downtown Batesville, IN. The Umbrella Sky Project started in 2011 in Portugal and since then, these pop-up shade structures have become an annual summertime installation and they have developed a cult following around the world. Don't miss the colors and patterns that make this a truly functional and interactive work of art.

Facebook.com/BatesvilleSky or baacindiana.org.

1-3 VOGT'S ANNUAL BLUEBERRY FESTIVAL

Blueberry treats, live music, crafts, petting zoo, and much more at Vogt's Farm, south of Batesville on SR129.

10am-7pm. No adm chg.; facebook.com/vogtfarmbatesville.

17-23 RIPLEY COUNTY 4-H FAIR

Farm animals, 4-H exhibits, rides, commercial vendors and grandstand events at the Ripley County Fairgrounds.

Ripley County Extension Office, 812-689-6511; extension.purdue.edu/Ripley.

30 AMERICAN LEGION "TASTE OF VERSAILLES"

Stop by the many LEGIONFEST grills for a Taste of: shrimp, ribs, sausage, brisket, chicken, and much more! On Water St. next to the Legion. 11am-4pm. No adm. chg. All grilling done on premises. Roger Kavanaugh, 812-621-1467.

AUGUST

JULY-SEPTEMBER BATESVILLE SKY – UMBRELLA SKY BATESVILLE

Don't miss the colors and patterns that make this a truly functional and interactive work of art. 121 Shopping Village in downtown Batesville, IN.
Facebook.com/BatesvilleSky or baacindiana.org.



6-7 XTERRA DINO TRIATHLON AND 5-MILE TRAIL RUN

XTERRA DINO Triathlon (swim, mountain bike, trail run), Versailles State Park. Mountain bike and helmet required. Check-in/registration at race site, Aug 6, 6-8pm; Check-in and 7pm Free XTERRA Racing Clinic. Aug 7, 7-8:30am registration. Events start at 9 am. Reg chg. Brian Holzhausen 317-336-7553, dinoseries.com.

7 DINO MOUNTAIN BIKE SERIES

Mountain bike races for all ages and abilities, Versailles State Park, 10am. Reg chg. Brian Holzhausen 317-336-7553, dinoseries.com.

SEPTEMBER

JULY-SEPTEMBER BATESVILLE SKY – UMBRELLA SKY BATESVILLE

Don't miss the colors and patterns that make this a truly functional and interactive work of art. 121 Shopping Village in downtown Batesville, IN.
Facebook.com/BatesvilleSky or baacindiana.org.

9-18 FRIENDSHIP FLEA MARKETS

Almost 500 vendors with new, used, antiques and collectibles and lots of specialty foods. Hours vary. Friendship flea markets and campgrounds: Hudson's Old Mill Campground 812-667-5322 facebook.com/HudsonsOldMill; or Friendship Flea Market 859-341-9188. www.friendshipfleamarket.com

10-18 NMLRA NATIONAL CHAMPIONSHIP SHOOT

Muzzleloading rifle competition, living history encampment, events, lectures, classes, youth activities, and rifle museum in Friendship. Hours vary. Parking & adm chg. National Muzzle Loading Rifle Association 812-667-5131; nmlra.org/nmlraevents

10 OLD TIMBERS LODGE DAY

Big Oaks Conservation Society open house at the historic Old Timbers Lodge, 1-6 pm. Tours of the Lodge, light refreshments, and information about their mission and volunteer opportunities at Big Oaks National Wildlife Refuge and at Old Timbers Lodge. Yvette Hayes, 812-528-5454; yhayes041206@gmail.com



FOR UPDATED EVENTS: WWW.RIPLEYCOUNTYTOURISM.COM/EVENTS



SEPTEMBER CONT.

21-25 120TH VERSAILLES PUMPKIN SHOW

Indiana's Oldest Festival! Family fun and rides; rides for all ages, art show, craft exhibits, live entertainment, music, and food. 5-10pm nightly; Sat. parade 10:30am with giant pumpkins and contest, Sun. 1-5pm. No adm. chg. Paul Sipples 812-699-2394; versaillespumpkinshow.com.

23-25 HASSMER FEST

Visit Versailles State Park for Hassmer Fest - a mountain bike festival! The family-friendly fest will include organized rides, a live band, drink vendors, a skills clinic, and more. Tim Weber, www.bikesimba.org.

24-25 KIWANIS 32ND ANNUAL APPLE FESTIVAL

Arts, crafts, entertainment, vendors, games, apples, Liberty Park in Batesville. Sat. 11am-6pm, Sun. 11am-4pm. No adm chg. Jay Reichmuth 812-934-3201; batesvillein.com/info.asp.

24-10/30 VOGT FARM PUMPKIN FESTIVAL

Horse-drawn trolley rides to pumpkin patch, petting zoo, pony rides, corn maze, paddleboat rides, on Sat-Sun ONLY. September 24-25, Oct 1-2, 8-9, 15-16, 22-23, 29-30. Hours vary. Vogt Farm, S.R. 129 south of Batesville. Adm chg. Jerry Vogt 812-934-4627; facebook.com/vogtfarmbatesville.

OCTOBER

1 ANNUAL FIESTA HISPANA

Authentic food cooked on site - tacos, carnitas, nachos, and a variety of desserts and drinks will be served 3pm-8pm. Live music by Trio de Colores/Tropicante, dancing, children's activities and more at Liberty Park in Batesville; 812-933-6116.

1-31 ALL ABOARD!! EXHIBIT

This is a favorite event featuring 12 unique settings reflecting 4 scales of model trains at the Batesville Area Historical Society museum. Donations welcome. batesvilleareahistoricalsociety.org/ for hours and information. Runs October through January 1.

1-30 VOGT FARM PUMPKIN FESTIVAL

Horse-drawn trolley rides to pumpkin patch, petting zoo, pony rides, corn maze, paddleboat rides, on Sat-Sun ONLY. September 24-25, Oct 1-2, 8-9, 15-16, 22-23, 29-30. Hours vary. Vogt Farm, S.R. 129 south of Batesville. Adm chg. Jerry Vogt 812-934-4627; facebook.com/vogtfarmbatesville.

FOR UPDATED EVENTS: WWW.RIPLEYCOUNTYTOURISM.COM/EVENTS

All information was current at press time, however due to ever-changing Covid-19 concerns, we recommend you check before you travel.

Sept. 30-October 1 16TH ANNUAL ETEL CELLARS WINERY FESTIVAL

Outdoor event, featuring live entertainment and dancing under the "big top" tent, wine tasting, food, fire pit, steam engine hayrides, arts & crafts and more! Children welcome. Admission: \$10-21+; under 21-no charge. Ertel Cellars year round, full-service restaurant will be open for your dining pleasure during festival hours. ertelcellars.com.



NOVEMBER

1-30 ALL ABOARD!! EXHIBIT

This is a favorite event featuring 12 unique settings reflecting 4 scales of model trains at the Batesville Area Historical Society museum. Donations welcome. batesvilleareahistoricalociety.org/ for hours and information. Runs October through January 1

12 TRI KAPPA ARTS & CRAFTS BAZAAR

Arts and crafts 9 am-3 pm, photos with Santa 10 am-2 pm, breakfast and lunch available at the South Ripley Elementary School, Versailles. No adm chg. Brenda Armbricht (812) 689-5732, barmbricht@hotmail.com or facebook.com/VersaillesOsgood-Delta-Rho-Chapter-Kappa-Kappa

DECEMBER

1-31 ALL ABOARD!! EXHIBIT

This is a favorite event featuring 12 unique settings reflecting 4 scales of model trains at the Batesville Area Historical Society museum. Donations welcome. batesvilleareahistoricalociety.org/ for hours and information. Runs October through January 1.



1-31 INFLATABLE WONDERLAND

Drive down through the arches to see over 500 inflatables at 2606 North Old Michigan Rd., Osgood, IN. Open evenings throughout December (weather permitting). For information go to facebook.com/Inflatable-Wonderland-197235277510294/ or the events page at RipleyCountyTourism.com.

1-31 LOHRUM CHRISTMAS IN THE PARK

Celebrate Christmas in the Park. Walk or drive through this wonderful light display located at the Ripley County Fairgrounds Park in Osgood, IN. Open evenings throughout December. Donations welcome. For information go to facebook.com/LohrumChristmasExtravaganza/ or the events page at RipleyCountyTourism.com.



FARMERS MARKETS

BATESVILLE FARMERS MARKET

Parking Lot on Main and Boehringer St, Downtown, Batesville, IN 47006 Sat 8am-Noon from May 7 to Oct 29, AND Wed 3:30pm-6pm from July 6 to Sept 7 Open Air/ Occasional live music & events by local businesses Fresh local foods and handmade crafts. Christie Ludwig, 812-212-7288 Website: batesvillefarmersmarket.com

MAIN STREET VERSAILLES FARMERS MARKET

Tyson Street, Courthouse Square, Versailles, IN 47042, 512-937-4228. Sat. 9am-Noon, June 4th-Sept. 17th *FREE Booth Space* www.facebook.com/mainstreetversailles

MILAN FARMERS MARKET

Daren Baker Memorial Park, Hwy 101, Milan, IN June-September per produce availability. Tuesdays 4-7 pm 812-654-3407 (Milan Town Hall) milanparkboard@gmail.com

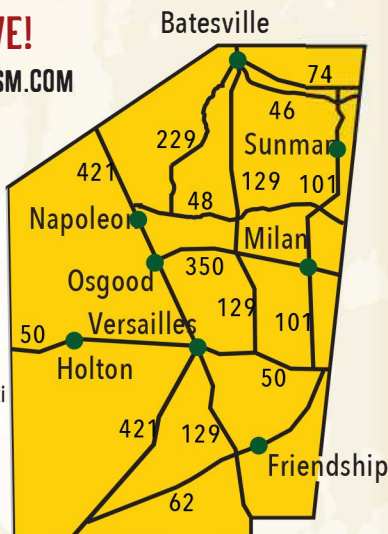
RIPLEY COUNTY FARMERS MARKET

305 Buckeye St, Osgood, IN 47037 Jun-Oct Sat 8-12am, Jul-Sep Wed 2:30 pm-5:30 pm Bob Ruggles 812-654-2574 facebook.com/pg/RipleyCountyFarmersMarket/events

JUST A SHORT DRIVE!

WWW.RIPLEYCOUNTYTOURISM.COM

CALL: 812-689-7431



RIPLEY COUNTY TOURISM BUREAU

220 East U.S. 50, • P.O. Box 21 • Versailles, IN 47042

DISCOVER OUR BRIDGES & TRAILS

OTTER CREEK COVERED BRIDGE

Otter Creek, 1885. County Rd. 850W, outside Holton

Ripley County is home to many handcrafted stone arch bridges built in the late 1800s, and other special types of bridges. Bridge enthusiasts may pick up a map at the Welcome Center showing their locations



HIGH BRIDGE

B & O Railroad Bridge, 1901.
Near Delaware
(photo below)



BUSCHING COVERED BRIDGE

(photo above)
Laughery Creek, 1885
On road to Versailles
State Park



FOUR-ARCH STONE BRIDGE

(photo above)
Otter Creek, 1885
County Rd. 500 N,
outside Napoleon

RIPLEY COUNTY BROCHURES



UNDERGROUND RAILROAD DRIVING TRAILS

Five Ripley County driving trails will lead you through areas known for Underground Railroad activity, and highlight other important historic sites



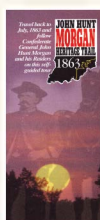
SOUTHEAST INDIANA BIKE TRAILS

Whether you like street, path, or mountain bike riding, we have many bicycle trails outlined for you throughout Ripley, Jennings, Decatur and Dearborn counties. Come for the weekend and try several trails. Come ride!



INDIANA WINE TRAIL

Ripley County has the most northern Indiana Wine Trail stop, where visitors can enjoy wine tastings, see wine being made, dine and enjoy the view of the vineyards. Visit the wineries



JOHN HUNT MORGAN HERITAGE TRAIL

Follow the trail that brought Confederate General John Hunt Morgan through Indiana and Ripley County, and into Ohio. Read about the Civil War raiders and how they stole the county's treasury and the Masonic Jewels from the local lodge in 1864.

throughout Ripley, Jefferson, Dearborn, and Jennings counties. Come enjoy and make memories in Southeast Indiana!

SPECIAL BROCHURES ARE AVAILABLE AT THE RIPLEY COUNTY WELCOME CENTER

220 East U.S. 50, Versailles, or call 812-689-7431. Brochures from all over Indiana are also available.

COME STAY WITH US!



1ST CLASS SOPHISTICATED MILAN LOFT

WWW.AIRBNB.COM/ROOMS/38341778

113 W CARR STREET, MILAN, IN 47031 In the heart of Old Downtown Milan. A suite once utilized as a formal meeting room for exclusive clubs, now transformed into a luxurious overnight retreat. Feel and hear the roar of the freight trains with front row views as they muscle through town. Atop the Blue Olive Cafe, next to the 1954 Hoosier Basketball Museum. A half block to country music, barbecue, and cold beers. This is not an ordinary town, but an extraordinary destination.

1954 HOOSIER BASKETBALL TEAM ROOM

WWW.AIRBNB.COM/ROOMS/19853207

113 W CARR STREET, MILAN, IN 47031 Clean and comfortable. Over 2000' of space with a lounge and entertainment pit. Several beds accommodates entire party in one loft-style space. A fully equipped kitchen and loads of natural sunlight make this space a must for families, teams, and friends. Next door to the 1954 Hoosier Basketball Museum in Old Downtown Milan Historical District and above the Blue Olive Cafe.

COZY RETREAT WWW.AIRBNB.AE/ROOMS/19379561

E COUNTY RD 1100 N, SUNMAN, IN 47041

This is one of the original farm houses in this area. It is well maintained and beautifully redecorated from top to bottom. Enjoy a walk along the creek. Watch the horses if you like and listen to the quiet. Thirty minutes to downtown Cincinnati, 10 minutes to Batesville; 30 minutes to Rushville/Geensburg, and 1.25 hrs. to Indianapolis.

COUNTRY GETAWAY WWW.AIRBNB.AE/ROOMS/16462007

E COUNTY RD 1100 N, SUNMAN, IN 47041 In the country, where it is quiet and away from the hustle and bustle of the city. The rooms are Shabby Chic with a luxurious feel. Everything has been recently transformed and is clean and new. Look out the window and see the neighbor's horses or go outside and see ours! Thirty minutes to downtown Cincinnati, 10 minutes to Batesville; 30 minutes to Rushville/Geensburg, and 1.25 hrs. to Indianapolis.

HASSMER HOUSE INN (812) 689-1001

HASSMERHOUSE.COM/HASSMER-HOUSE-INN

103 W TYSON ST., VERSAILLES, IN 47042

The Hassmer Houe Inn is nestled right in the heart of Versailles, Indiana. Featuring a large bedroom with a king size bed, personal kitchenette, and bathroom. Room service upon request. Special packages available.

MARY HELEN'S BED & BREAKFAST AND FINE DINING (812) 934-3468. MARYHELENSPLACE.COM.

13296 N. COONHUNTERS RD., BATESVILLE, IN 47006. Looking for a romantic get-a-way, peaceful weekend for reflection, or place to retreat with family or friends? Located in a beautiful setting just outside of Batesville, Mary Helen's is more than a place to put your head, they also offer fine dining.

MOON-LITE MOTEL (812) 689-6004

520 S. ADAMS STREET (U.S. 421), VERSAILLES, IN 47042

New local owners, new management, and remodeled rooms make this the perfect spot for a nice overnight during one of many area events or while visiting family.

QUALITY INN (812) 934-6185

112 STATE RD. 46 EAST • BATESVILLE, IN 47006

QUALITYINN.COM This is the perfect place for an overnight, if you're looking for an indoor swimming pool and numerous restaurants within walking distance. Newly remodeled. Coffee 24/7, free hot breakfast, and wifi.

THE SHERMAN (800) 445-4939 DR (812) 934-1000

16 E GEORGE ST, BATESVILLE, IN 47042

WWW.THE-SHERMAN.COM The historic 1852 Sherman House Restaurant and Inn has undergone complete remodeling with new owners, but they kept its old world charm and German menu. Stop in to see the new German Black Forest bar and enjoy an adult beverage before dinner. The renovated hotel rooms opened in 2017.

SONSHINE CABIN (812) 756-2189

WWW.HOMEAWAY.COM/VACATION-RENTAL/P4919899

9075 S COUNTY ROAD 225W, MADISON, IN 47250

Situated on 15 acres, this cabin offers peace and quiet to visitors. Conveniently located off Hwy 421 near Versailles, Madison, and Friendship, IN. The cabin boasts 1800 sq. ft. of living space with 3 private bedrooms, a huge front porch with seating to watch the wildlife. A beautiful creek offers hours of fun for the kids.

THOUSAND TRAILS INDIAN LAKES CABINS

THOUSANDTRAILS.COM/INDIANA/INDIAN-LAKES-RV-

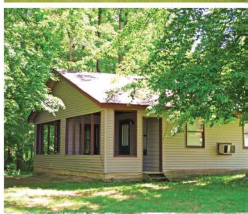
CAMPGROUND. 7234 STATE ROAD 46, BATESVILLE, IN 47006

(812) 934-5496 Deluxe cabins, with kitchens and other amenities, await your stay just outside of Batesville. Enjoy swimming or fishing in the lake, games at the clubhouse, hiking, boat rental, and much more.

THE INN AT WALHILL FARM (812) 934-2600

WWW.WALHILLFARM.COM/INN-WALHILL-FARM

857 SIX PINE RANCH RD • BATESVILLE, IN 47006 250-acre working farm with plenty of trees, perfect for a relaxing day outdoors. Woods, gardens, and animals. Four Equestrian-themed rooms, all including cable and WiFi.



CAMPING

BATESVILLE KOA CAMPGROUND BATESVILLE • (812) 934-0296

DELAWARE CAMPGROUND MILAN • (812) 689-5818

FRIENDSHIP ASSOCIATION FLEA MARKET CAMPSITES (859) 341-9188

WWW.FRIENDSHIPFLEAMARKET.COM

HUDSON'S OLD MILL CAMPGROUND FRIENDSHIP • (812) 667-5322

RIPLEY COUNTY PARKS CAMPGROUND (812) 689-6535

WWW.RIPLEYCOUNTY.COM/PARKS

VERSAILLES STATE PARK CAMPSITES (866) 622-6746

WWW.IN.GOV/DNR/PARKLAKE/2963.HTM

WHELOCK LAKE CAMPGROUND DILLSBORO (812) 274-5423

WWW.CAMPWHELOCK.COM

FOR MORE INFO ON LODGING: WWW.RIPLEYCOUNTYTOURISM.COM/LODGING





RIPLEY COUNTY TOURISM BUREAU

220 East U.S. 50 • P.O. Box 21

Versailles, IN 47042

ADVENTURE AWAITS
IN SOUTHEAST INDIANA

www.ripleycountytourism.com

(812) 689-7431