

2026



*Find Your Adventure*

**IN INDIANA**



RIPLEY COUNTY  
**film  
fest**



[ripleycountytourism.com](http://ripleycountytourism.com)

Arts  
Nature  
History  
Thrills

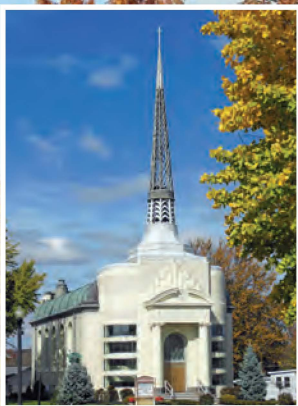


## MILAN '54 HOOSIERS MUSEUM

201 W. CARR STREET, MILAN

(812) 654-2772 • MILAN54.ORG

The history of basketball in Indiana wouldn't be complete without the story of the small Milan High School's State Basketball Championship over the much larger Muncie Central in 1954. People came from many miles away to congratulate the team that year, and now they come from all over the world to hear the story. In 1986 the movie "Hoosiers", inspired by the team, hit the large screen and has often been named the best sports story ever. The museum houses the largest collection of "Hoosiers" memorabilia.



Tyson Methodist Church



Ripley County Courthouse



Lil' Charlie's Restaurant & Brewery



Weberding's Carving Shop

## VERSAILLES STATE PARK

1387 E. U.S. 50, VERSAILLES • (812) 689-6424

[IN.GOV/DNR/PARKLAKE/2963.HTM](http://IN.GOV/DNR/PARKLAKE/2963.HTM)

Mountain biking, hiking, boating, swimming, camping, fishing, and picnicking are just some of the popular activities at Versailles State Park, the second largest park in Indiana. The park, beautiful with its rolling hills and thick forests, is a wonderful place to spend time. The park offers 30 miles of challenging mountain bike riding on ten trails and eight miles of hiking on four trails. Eleven horse trails lead horse owners through the forest on 25 miles of bridle trails. Steeped in history, the park was home to many Civilian Conservation Corps during the mid-1930s. Many of the buildings and trails they built are still being used today. A statue honoring Indiana's CCC men is located at the park office.



## RIPLEY COUNTY COURTHOUSE

115 N. MAIN STREET, VERSAILLES • [RIPLEYCOUNTY.COM](http://RIPLEYCOUNTY.COM) Built in 1863, the Courthouse houses the judicial offices for the county. In 2012 county officials built a new annex building to house the other county offices. In the main first-floor hallway of the courthouse is the Ripley County History Tree. The leaves of the tree signify important events or people throughout the county's history. The Courthouse lawn displays a beautiful black granite memorial to those from the county who have served our country.

## OSGOOD SCULPTURE PARK

N BUCKEYE STREET, OSGOOD

[WWW.FACEBOOK.COM/THEOSGOODSCULPTURE](http://WWW.FACEBOOK.COM/THEOSGOODSCULPTURE)

The Osgood Sculpture is a 40-foot-long interactive sculpture made by local company Iron Timbers using teak wood and copper which are great elements for outside. The Osgood Lion's Club Park was updated, and a mural by Robert Dafford now adorns the wall of the building on the south side of the park, and the buffalo statue has returned with a fresh coat of paint to round out the park.



## BATESVILLE SKATEPARK & OUTDOOR ADVENTURE

671 POHLMAN ST., BATESVILLE • [FACEBOOK.COM/BATESVILLEAREASKATEPARKADVOCACY](http://FACEBOOK.COM/BATESVILLEAREASKATEPARKADVOCACY)

Batesville Skatepark & Outdoor Adventure is a FREE outdoor adventure park located in Batesville, IN. This state-of-the-art skatepark is open to bikes, skateboards, skates, and scooters. A pump track was added in October, 2023 and a bouldering wall is in the works. There is also disc golf course near the park.

## KEVIN HENSLEY MEMORIAL PARK

128 N MAIN ST., VERSAILLES • [MAINSTREETVERSAILLES.COM](http://MAINSTREETVERSAILLES.COM) Murals border the park, which boasts a splash pad, pergola with swings, musical play instruments, benches and Ride & Share bikes. On select dates during the summer, enjoy live music at the Holdsworth Entertainment Pavilion.

## TYSON METHODIST CHURCH

324 W. TYSON ST., VERSAILLES • (812) 689-6976 [TYSONMETHODISTCHURCH@GMAIL.COM](mailto:TYSONMETHODISTCHURCH@GMAIL.COM)

A unique Art Deco church, Tyson Methodist Church is on the National Register of Historic Places. Completed in 1937 by Jim Tyson, co-founder of the Walgreens Drug Store, the church was created from materials purchased all over the world, with no nails. M-F 9-12

## LIL' CHARLIE'S RESTAURANT & BREWERY

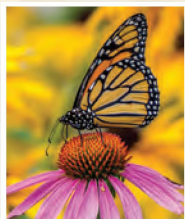
504 E. PEARL STREET, BATESVILLE • (812) 934-6392 • [LILCHARLIES.COM](http://LILCHARLIES.COM)

Things are always hopping at Lil' Charlie's where they make their own Microbrews; serve over 55 other beers; and lunch and dinner are always tasty.

## NATIONAL MUZZLE LOADING RIFLE ASSOCIATION

6219 EAST STATE ROAD 62, FRIENDSHIP • (812) 432-2670 • [NMLRA.ORG](http://NMLRA.ORG) Rifle enthusiasts come from all over the world twice a year for competitions in the Friendship Valley (known as the Friendship Shoots). They also host youth, family, and other shoots. The Friendship Valley is also home to flea markets during the spring and fall Friendship Shoots. Check our events schedule for dates.





## **BIG OAKS NATIONAL WILDLIFE REFUGE**

**1661 WEST JPG NIBLO RD., MADISON • (812) 273-0783**

**FWS.GOV/REFUGE/BIG\_OAKS/** Established in 2000, from what was formerly the Jefferson Proving Ground, Big Oaks covers approximately 50,000 acres of gently rolling hills to flat lands. The majority of the Refuge is in Ripley County, however, the entrance gate is in Jefferson County. Activities at the Refuge include fishing and boating at Old Timbers Lake, hunting, wildlife viewing, environmental education and more. Refuge open days and hours are limited, and permits are required. Call for details.



**Ertel Cellars Winery & Bistro**



**The Gibson Theatre**



**The Damm Theatre**



**Osgood Historical Society**

## WEBERDING'S CARVING SHOP

1230 STATE ROAD 46 EAST, BATESVILLE • (812) 934-3710

**WEBERDING.COM** A part of the Batesville landscape since 1942, the Master Carvers in this historic business have been creating custom-made furniture, cabinetry, fire-place mantels, and more for customers all over the world. They are also known for refurbishing statues, tabernacles, candlesticks and more religious items. They demonstrate their skills, and have a gift shop.



## ERTEL CELLARS WINERY AND BISTRO

3794 EAST COUNTY RD. 1100 NORTH, BATESVILLE

(812) 933-1500 • **ERTELCCELLARSWINERY.COM**

Much more than a winery, Ertel's is a place to relax and fine dine in the countryside. Watch the Vintner at work and enjoy complimentary wine tastings.



## KIDS DISCOVERY FACTORY

110 SYCAMORE ST., BATESVILLE

**KIDSDISCOVERYFACTORY.ORG** Kids Discovery Factory's current facility is under construction until late 2026. Once open, the museum will offer 10,000 sq ft of exhibit spaces for children 0-14 years old. KDF still offers a variety of STEAM focused summer camps, pop-up play events at regional locations, and a traveling exhibit program for schools during the construction phase. For more information regarding current camps and events, visit their website or follow on Facebook.



## HISTORIC THEATRES

### BEL-AIR DRIVE-IN THEATER

337 N. U.S. HWY 421, VERSAILLES • (812) 689-5525

Iconic drive-in movie theater. The Bel-Air Drive-In opened for business in 1952. Open in the Summer.



### THE DAMM THEATRE

117 N. BUCKEYE STREET, OSGOOD • (812) 689-DAMM (3266)

The Damm family start a theatre in this location in 1922. The building was remodeled and opened again in June 2008.



### THE GIBSON THEATRE

107 N. MAIN STREET, BATESVILLE • (812) 934-3404

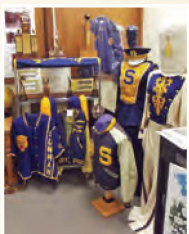
Dr. C.W. Gibson built this theatre in 1921, first for theatrical plays and later "talking pictures".

## HISTORICAL MUSEUMS

### SUNMAN HISTORICAL MUSEUM

604 N MERIDIAN ST., SUNMAN

Located in the Sunman Town Hall. Open M-Thur. 8am-4pm (closed 12-1 for lunch), (812) 623-2066.



### BATESVILLE AREA HISTORICAL SOCIETY

15 W GEORGE ST., BATESVILLE • (812) 932-0999

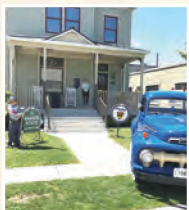
**BATESVILLEAREAHISTORICALSOCIETY.ORG**

Open March-December THU & FRI • 10:00 - 2:00 SAT - 9 - Noon.

### RIPLEY COUNTY HISTORICAL SOCIETY

125 S WASHINGTON ST, VERSAILLES, IN 47042

(812) 689-3031 • **RCHSLIB.ORG** Open M-F, 1-4pm.



### OSGOOD HISTORICAL MUSEUM

128 S BUCKEYE ST, OSGOOD, IN 47037 • (812) 689-1876

Open Fri-Sat 2pm-6pm, Sun noon-4pm.



# RIPLEY COUNTY EVENTS

## FEBRUARY

### 7 PARTY PLACE BRIDAL EXPO

Join us along with southeastern Indiana's top wedding vendors for fashions, trends, tastings, ideas, door prizes, and more. 10am-3pm. No adm fee. Contact Mary Ellen at 513-519-9936; info@romwebermarketplace.com; romwebermarketplace.com/special\_events.

### 12-16 ANNUAL CHERRY THING-A-LING DAYS

Schmidt Family Bakery Cherry Thing-a-lings™ on sale. Thur.-Mon. 4am-5pm in the Batesville Shopping Village; 812-934-4501, schmidtbakery.com.

## MARCH

### 3/1 - 5/2 RIPLEY COUNTY PARK HOP

Participate in a scavenger hunt as you visit 21 parks in Ripley County. Enjoy story walks and other activities throughout the event. Collect prizes at the Park Hop Finale at Versailles State Park on May 2nd. More information at ripleycountyreads.org.

## APRIL

### 11 SE IN F.A.R.M. CLUB'S SWAP MEET

Farm, lawn & garden, workshop, antiques, collectibles, auto & truck items, crafts, farm and orchard vendors and more! Cleaning up around your property, or need room in your garage or barn? \$5 per person to buy, sell, or trade; kids under 12 free. Ripley County Fairgrounds, Osgood. Chuck & Sherri Heck 812-584-5153, farmclubonline.com; facebook.com/FARMclub

### 24-26 RIPLEY COUNTY 48-HOUR FILMMAKERS

**CHALLENGE** - We are thrilled to partner with the Ripley County Community Foundation for the 48-Hour Filmmakers Challenge as part of the 2026 Ripley County Film Fest! Grab your friends, get creative, and see what you can create in just 48 hours. The finished films will premiere during the Ripley County Film Fest finale on Saturday, June 6th at the Damm Theatre.

## MAY

### 2 ART IN NATURE COMMUNITY ART SHOW AND

**ARTISAN DEMONSTRATIONS** Visit Versailles State Park for artisan demonstrations in basket making with the Basket man, hand-made moccasins, blacksmithing, and stained glass. Hands-on demonstrations with the Southeastern Indiana Wood Turners, pottery and more. 812-689-7431; ripleycountytourism@gmail.com



## **2 RIPLEY COUNTY PARK HOP FINALE**

Participate in a scavenger hunt as you visit 21 parks in Ripley County March 1-May 2. Enjoy story walks and other activities throughout the event. Attend the Park Hop Finale at Versailles State Park on May 2nd to collect prizes. More information at [ripleycountyreads.org](http://ripleycountyreads.org)

## **2-3 VERSAILLES STATE PARK – WELCOME BACK WEEKEND**

Visit Versailles State Park for a scenic hike with the possibility of enjoying some spring wildflowers in Indiana. Free admission on May 3rd. Contact the park office for details at 812-689-6424.



## **JUNE**

### **1-6 RIPLEY COUNTY FILM FEST**

A celebration of storytelling, creativity, and community, Ripley County Film Fest offers short films screened at the Damm Theater in Osgood and the Gibson Theatre in Batesville. Ripley County Community Foundation - [rccfonline.org](http://rccfonline.org) or email Megan Cutter at [mcutter@rccfonline.org](mailto:mcutter@rccfonline.org).

### **6 CAR SHOW**

Cars, food, music, vendors and more. Trophy awards for 5 different best in class categories. Contact Mary Ellen at 513-519-9936; [info@romwebermarketplace.com](mailto:info@romwebermarketplace.com); [romwebermarketplace.com/special\\_events](http://romwebermarketplace.com/special_events).

### **11-13 RIPLEY COUNTY PLEIN AIR PAINT OUT**

Plein Air painters of all levels compete for \$3000 in awards at the Ripley County Plein Air Paint Out ending with an open to the public art show of completed works on display at Versailles State Park. 812-689-7431; [ripleycountytourism@gmail.com](mailto:ripleycountytourism@gmail.com).

### **13-21 FRIENDSHIP FLEA MARKETS**

Almost 500 vendors with new, used, antiques and collectibles and lots of specialty foods. Hours vary. Friendship flea markets and campgrounds: Hudson's Old Mill Campground 812-667-5322 [facebook.com/HudsonsOldMill](https://facebook.com/HudsonsOldMill); or Friendship Flea Market 859-341-9188 [www.friendshipfleamarket.com](http://www.friendshipfleamarket.com).

### **13-21 NMLRA NATIONAL SPRING SHOOT**

Muzzle loading rifle competition, living history encampment, events, lectures, classes, youth activities, and rifle museum in Friendship. Hours vary. Parking & adm chg. National Muzzle Loading Rifle Association 812-432-2670; [nmlra.org/nmlraevents](http://nmlra.org/nmlraevents).





## JUNE CONT.

**25-27 30TH ANNUAL ANTIQUE MACHINERY SHOW**  
SE Indiana FARM Club event featuring all Tri-State Tractors and Equipment made in Indiana, Ohio, and Kentucky. All exhibitors welcome - any make or model. Saturday parade at 1pm. Hit-n-miss engines, steam engines, Oilfield Engines, blacksmith, sawmill, threshing, hay press, PTO Dyno testing demonstrations. Vintage tractors of all makes and years, antique-craft-flea market, live music and more. Regional Points Truck and Tractor Pull Saturday evening. Ripley County Fairgrounds, Osgood. \$5 adm chg. Parking and grandstand adm chg. Thurs-Sat, 9am-dark. Chuck & Sherri Heck 812-584-5153, farmclubonline.com; facebook.com/FARM Club of Southeastern Indiana



## JULY

### CELEBRATING AMERICA'S 250!

Expect celebrations, parades, historical presentations, food, fun activities, fireworks, and more! Visit our Facebook page or [RipleyCountyTourism.com/events](http://RipleyCountyTourism.com/events) or email [ripleycountytourism@gmail.com](mailto:ripleycountytourism@gmail.com) for current dates and information."

### 19-25 RIPLEY COUNTY 4-H FAIR

Farm animals, 4-H exhibits, rides, commercial vendors and grandstand events at the Ripley County Fairgrounds. Ripley County Extension Office, 812-689-6511; [extension.purdue.edu/Ripley](http://extension.purdue.edu/Ripley).

### 25 AMERICAN LEGION "TASTE OF VERSAILLES"

Stop by the many LEGIONFEST grills for a Taste of: ribs, sausage, brisket, chicken, corn on the cob, watermelon, fried green tomatoes and oh, so much more! On Water St. next to the Legion. 11am-4pm. No adm. chg. All grilling done on premises. Roger Kavanaugh, 812-621-1467.

## AUGUST

### 15 RIPLEY COUNTY READS AUTHOR FAIR

Ripley County Reads Author Fair, featuring approximately 30 local and regional authors and a few publishers, 10am-12:30pm. The Author Fair is your chance to meet the authors and hear about the writing / publishing process. In addition, they will have books available for purchase and signing. Batesville Memorial Public Library located at 131 N. Walnut St, Batesville, IN; [info@ebatesville.com](mailto:info@ebatesville.com); [www.ripleycountyreads.org](http://www.ripleycountyreads.org)

# SEPTEMBER

## 12-20 FRIENDSHIP FLEA MARKETS – FALL

Almost 500 vendors with new, used, antiques and collectibles and lots of specialty foods. Hours vary. Friendship flea markets and campgrounds: Hudson's Old Mill Campground 812-667-5322 [facebook.com/HudsonsOldMill/](https://www.facebook.com/HudsonsOldMill/); or Friendship Flea Market 859-341-9188 [www.friendshipfleamarket.com](http://www.friendshipfleamarket.com)



## 12-20 NMLRA NATIONAL CHAMPIONSHIP SHOOT

Muzzle loading rifle competition, living history encampment, events, lectures, classes, youth activities, and rifle museum in Friendship. Hours vary. Parking & adm chg. National Muzzle Loading Rifle Association 812-432-2670; [nmlra.org/nmlraevents](http://nmlra.org/nmlraevents).

## 23-26 123RD VERSAILLES PUMPKIN SHOW

Indiana's Oldest Festival! Family fun and rides; rides for all ages, art show, craft exhibits, live entertainment, music, and food. 5-10pm nightly; Sat. parade 10:30am with giant pumpkins and contest. No adm. chg. Keri Johnson, [lionsversailles@gmail.com](mailto:lionsversailles@gmail.com); [versaillespumpkinshow.com](http://versaillespumpkinshow.com).

## 26-27 KIWANIS 36TH ANNUAL APPLEFEST

Arts, crafts, and business expos, entertainment, games, food and everything apple at Liberty Park in Batesville. Sat. 10am-6pm, Sun. 11am-4pm. No adm. chg. Free parking. Tricia Fasbinder, 812-569-5904; [tlmiller399@yahoo.com](mailto:tlmiller399@yahoo.com); [batesvillein.com/info.asp](http://batesvillein.com/info.asp).

## 26 - OCT. 25 VOGT FARM PUMPKIN FESTIVAL

Horse-drawn trolley rides to pumpkin patch, petting zoo, pony rides, corn maze, paddleboat rides, on Sat-Sun ONLY. September 26-27, October 3-4, 10-11, 17-18, 24-25. Hours vary. Vogt Farm, S.R. 129 South of Batesville. Adm chg. 812-934-4627; [facebook.com/vogtfarmbatesville](https://www.facebook.com/vogtfarmbatesville).

## FOR UPDATED EVENTS: [WWW.RIPLEYCOUNTYTOURISM.COM/EVENTS](http://WWW.RIPLEYCOUNTYTOURISM.COM/EVENTS)

All information was current at press time, however we recommend you check before you travel.





## OCTOBER

### 1-31 ALL ABOARD!! EXHIBIT

This favorite event is one of the largest model train exhibits in the tri-state area with 3000 square feet of trains, featuring 26 unique settings reflecting 16 scales of model trains and trolleys at the Batesville Area Historical Society Museum. Donations welcome. <https://batesvillehistoricalcenter.org/> for hours and information. Runs October through January 1.

### 1-31 BATESVILLE BOOVILLE

October is packed with festive fall and Halloween activities in Batesville through-out the month of October. Visit Batesville Area Chamber of Commerce at [batesvillein.com](http://batesvillein.com) for a complete list of events.

### 2-3 20TH ANNUAL ERTEL CELLARS WINERY

**FESTIVAL** Outdoor event, featuring live entertainment and dancing under the "big top" tent, wine tasting, food, fire pit, steam engine hayrides, arts & crafts and more! Children welcome. Admission: \$10-21+; under 21-no charge. Ertel Cellars year-round, full-service restaurant will be open for your dining pleasure during festival hours. [ertelcellars.com](http://ertelcellars.com).

### 3-25 VOGT FARM PUMPKIN FESTIVAL

Horse-drawn trolley rides to pumpkin patch, petting zoo, pony rides, corn maze, paddle boat rides, on Sat-Sun ONLY. October 3-4, 10-11, 17-18, 24-25. Hours vary. Vogt Farm, S.R. 129 South of Batesville. Adm chg. 812-934-4627; [facebook.com/vogtfarmbatesville](https://facebook.com/vogtfarmbatesville).

### 9-11 HASSMER FEST

Visit Versailles State Park for Hassmer Fest - a mountain bike festival! The family-friendly fest will include organized rides, a live band, drink vendors, a skills clinic, and more. Kellie Lockwood, [simba@bikesimba.org](mailto:simba@bikesimba.org); [www.bikesimba.org](http://www.bikesimba.org).

## NOVEMBER

**1-30 ALL ABOARD!! EXHIBIT** This favorite event is one of the largest model train exhibits in the tri-state area with 3000 square feet of trains, featuring 26 unique settings reflecting 16 scales of model trains and trolleys at the Batesville Area Historical Society Museum. Donations welcome. <https://batesvillehistoricalcenter.org/> for hours and information. Runs October through January 1.

## NOVEMBER

### 7 TRI KAPPA WINTER WONDERLAND ARTS & CRAFTS BAZAAR

Arts and crafts 9 am-2 pm, photos with Santa 10 am-2 pm, breakfast and lunch available at the South Ripley Elementary School, Versailles. No adm chg. Michelle Partin at 812-756-1337 or trikappa.bazaar@gmail.com or facebook.com/Versailles-Osgood-Delta-Rho-Chapter-Kappa-Kappa-Kappa-Inc



## DECEMBER

**1-31 ALL ABOARD!! EXHIBIT** This favorite event is one of the largest model train exhibits in the tri-state area with 3000 square feet of trains, featuring 26 unique settings reflecting 16 scales of model trains and trolleys at the Batesville Area Historical Society Museum. Donations welcome. Runs October through January 1. <https://batesvillehistoricalcenter.org/> for hours and information.

### 1-31 INFLATABLE WONDERLAND

Drive down through the arches to see over 500 inflatables at 2606 North Old Michigan Rd., Osgood, IN. Open evenings throughout December (weather permitting). For information go to [facebook.com/Inflatable-Wonder](https://facebook.com/Inflatable-Wonder) and or the events page at [RipleyCountyTourism.com](https://RipleyCountyTourism.com).



### 1-31 LORHUM CHRISTMAS AT THE PARK

Celebrate Christmas in the Park. Walk or drive through this wonderful light display located at the Ripley County Fairgrounds Park in Osgood, IN. Open evenings throughout December. Donations welcome. For information go to [facebook.com/LohrumChristmasExtravaganza/](https://facebook.com/LohrumChristmasExtravaganza/) or the events page at [RipleyCountyTourism.com](https://RipleyCountyTourism.com).

**UPDATED EVENTS: [WWW.RIPLEYCOUNTYTOURISM.COM/EVENTS](https://WWW.RIPLEYCOUNTYTOURISM.COM/EVENTS)**





## FARMERS MARKETS

### BATESVILLE FARMERS MARKET

Parking Lot on Main and Boehringer St, Downtown, Batesville, IN 47006

Sat 8am-Noon from May 2 to Oct 31, and Wed 3:30pm-6pm from July 8 to Aug 26

Open Air/Occasional live music & events by local businesses. Fresh local foods and handmade crafts.

Christie Ludwig, 812-212-7288

Website: [batesvillefarmersmarket.com](http://batesvillefarmersmarket.com)

### MAIN STREET VERSAILLES FARMERS MARKET

Main Street, Courthouse Square

Versailles, IN 47042, 812-565-8018

Sat. 9am-Noon, June 6-Sept 19 \*FREE Booth Space\*

[www.facebook.com/mainstreetversailles](http://www.facebook.com/mainstreetversailles)

### MILAN FARMERS MARKET

Daren Baker Memorial Park, Hwy 101, Milan, IN

June-September per produce availability

Tuesdays 4-7pm

812-654-3407 (Milan Town Hall)

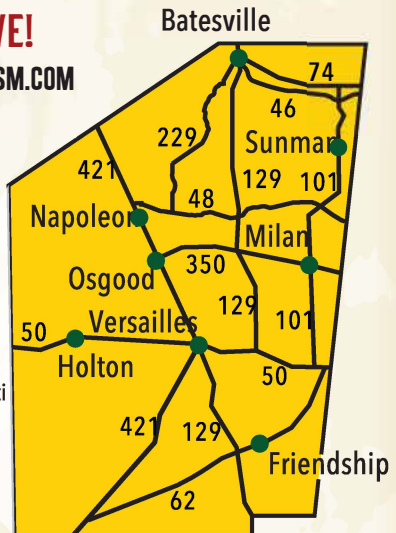
[milanparkboard@gmail.com](mailto:milanparkboard@gmail.com)

**FOR UPDATES: [WWW.RIPLEYCOUNTYTOURISM.COM](http://WWW.RIPLEYCOUNTYTOURISM.COM)**

## JUST A SHORT DRIVE!

[WWW.RIPLEYCOUNTYTOURISM.COM](http://WWW.RIPLEYCOUNTYTOURISM.COM)

CALL: 812-689-7431



## RIPLEY COUNTY TOURISM BUREAU

220 East U.S. Highway 50 • PO Box 21 • Versailles, IN 47042

# DISCOVER OUR BRIDGES & TRAILS

## OTTER CREEK COVERED BRIDGE

Otter Creek, 1885. County Rd. 850W, outside Holton

Ripley County is home to many handcrafted stone arch bridges built in the late 1800s, and other special types of bridges. Bridge enthusiasts may pick up a map at the Welcome Center showing their locations



## HIGH BRIDGE

B & O Railroad Bridge, 1901.  
Near Delaware  
(photo below)



## BUSCHING COVERED BRIDGE

(photo above)  
Laughery Creek, 1885  
On road to Versailles  
State Park



## FOUR-ARCH STONE BRIDGE

(photo above)  
Otter Creek, 1885  
County Rd. 500 N,  
outside Napoleon

## RIPLEY COUNTY BROCHURES



## UNDERGROUND RAILROAD DRIVING TRAILS

Five Ripley County driving trails will lead you through areas known for Underground Railroad activity, and highlight other important historic sites



## SOUTHEAST INDIANA BIKE TRAILS

Whether you like street, path, or mountain bike riding, we have many bicycle trails outlined for you throughout Ripley, Jennings, Decatur and Dearborn counties. Come for the weekend and try several trails. Come ride!



## INDIANA WINE TRAIL

Ripley County has the most northern Indiana Wine Trail stop, where visitors can enjoy wine tastings, see wine being made, dine and enjoy the view of the vineyards. Visit the wineries

throughout Ripley, Jefferson, Dearborn, and Jennings counties. Come enjoy and make memories in Southeast Indiana!



## SOUTHEAST INDIANA COFFEE TRAIL

Your passport to the best coffee in Southeast Indiana. Explore a variety of coffee shops throughout Southeast Indiana. For updates on the trail, visit the Southeast Indiana Coffee Trail Facebook page.

**SPECIAL BROCHURES ARE AVAILABLE AT THE RIPLEY COUNTY WELCOME CENTER**

220 East U.S. 50, Versailles, or call 812-689-7431. Brochures from all over Indiana are also available.

# COME STAY WITH US!



## **1ST CLASS SOPHISTICATED MILAN LOFT**

[WWW.AIRBNB.COM/ROOMS/38341778](http://WWW.AIRBNB.COM/ROOMS/38341778)

**113 W CARR STREET, MILAN, IN 47031** In the heart of Old Downtown Milan. A suite once utilized as a formal meeting room for exclusive clubs, now transformed into a luxurious overnight retreat. Feel and hear the roar of the freight trains with front row views as they muscle through town. Next to the 1954 Hoosier Basketball Museum.



## **BISON BUNKHOUSE HIDEAWAY AT MAYBERRY WEST FARMS**

[WWW.AIRBNB.COM/ROOMS/844971153143141362](http://WWW.AIRBNB.COM/ROOMS/844971153143141362)

**8893 E COUNTY RD 700 N, MILAN, IN 47031** Bison and Clydesdales await you at Mayberry West Farms! Situated on 95 acres in SE Indiana, you'll enjoy privacy, nature & animals. Go fishing in your choice of 3 ponds, hike the wooded trails, grill while enjoying the outdoor fireplace, relax in the hot tub & make s'mores around the fire pits! Our farm family includes Clydesdales, Bison, a donkey, horses & chickens. The bunkhouse is located in the middle of it all!



## **CEDAR CHEST RENTALS - UNWIND HARBOR**

[WWW.AIRBNB.COM/ROOMS/818925001332765329](http://WWW.AIRBNB.COM/ROOMS/818925001332765329)

**NEAR VERSAILLES, IN 47042** The historical barn is nestled in the heart of Southeastern Indiana's farmland. Enjoy the Crossroads to America by adventuring to local hometowns, State Parks, shops, and restaurants. Enjoy live music, museums, and other attractions nearby. If it's serenity that you're searching for you'll find that by watching the beautiful sunrises or sitting around the fire pit gazing up at the stars. You won't forget the peacefulness of this destination.



## **CEDAR CHEST RENTALS - SCHOOL DAYS**

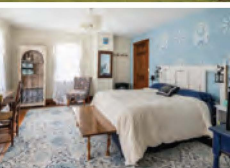
[WWW.AIRBNB.COM/ROOMS/1012155801688824168](http://WWW.AIRBNB.COM/ROOMS/1012155801688824168)

**NEAR VERSAILLES, IN 47042** Built in 1879, this gorgeous property is situated just minutes from local coffee shops, locally owned restaurants, antique shops, and the second largest State Park in Indiana. Be entertained with live music, museums, and other attractions nearby. Enjoy the modern amenities as well as the historical features this reconstructed schoolhouse has to offer.



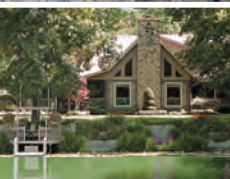
## **COZY RETREAT** [WWW.AIRBNB.COM/ROOMS/19379561](http://WWW.AIRBNB.COM/ROOMS/19379561)

**E COUNTY RD 1100 N, SUNMAN, IN 47041** This is one of the original farm houses in this area. It is well maintained and beautifully redecorated from top to bottom. Enjoy a walk along the creek. Watch the horses if you like and listen to the quiet. Thirty minutes to downtown Cincinnati, 10 minutes to Batesville; 30 minutes to Rushville/Geensburg, and 1.25 hrs. to Indianapolis.



## **COUNTRY GETAWAY** [WWW.AIRBNB.COM/ROOMS/16462007](http://WWW.AIRBNB.COM/ROOMS/16462007)

**E COUNTY RD 1100 N, SUNMAN, IN 47041** In the country, where it is quiet and away from the hustle and bustle of the city. The rooms are Shabby Chic with a luxurious feel. Everything has been recently transformed and is clean and new. Look out the window and see the neighbor's horses or go outside and see ours! Thirty minutes to downtown Cincinnati, 10 minutes to Batesville; 30 minutes to Rushville/Geensburg, and 1.25 hrs. to Indianapolis.



## **MARY HELEN'S BED & BREAKFAST**

(812) 934-3468. [MARYHELENSPLACE.COM](http://MARYHELENSPLACE.COM).

**13296 N. COONHUNTERS RD., BATESVILLE, IN 47006.** Looking for a romantic get-a-way, peaceful weekend for reflection, or place to retreat with family or friends? Located in a beautiful setting just outside of Batesville.



## **MOON-LITE MOTEL** (812) 689-6004

**520 S. ADAMS STREET (U.S. 421), VERSAILLES, IN 47042**

This motel features 24 fully remodeled rooms and 8 new rooms. This is the perfect spot for a nice overnight during one of many area events or while visiting family

[WWW.RIPLEYCOUNTYTOURISM.COM/LODGING](http://WWW.RIPLEYCOUNTYTOURISM.COM/LODGING)

## PHIL'S PLACE

COUNTY ROAD 800 N, SUNMAN, IN 47041  
AIRBNB.COM/ROOMS/685451248109692937

A cozy country cottage getaway from it all! Extra amenities include a hot tub and a bottle of local wine to enjoy! Centrally located, visitors can easily explore all the area has to offer, including Perfect North Slopes, the Creation museum, antique markets, casinos, and festivals.

## QUALITY INN (812) 934-6185

112 STATE RD. 46 EAST • BATESVILLE, IN 47006 • QUALITYINN.COM

This is the perfect place for an overnight, if you're looking for an indoor swimming pool and numerous restaurants within walking distance. Newly remodeled. Coffee 24/7, free hot breakfast, and wifi.

## THE SHERMAN (800) 445-4939 OR (812) 934-1000

13 S MAIN ST, BATESVILLE, IN 47006 • WWW.THE-SHERMAN.COM

The historic 1852 Sherman House has 22 unique guest rooms that were all beautifully restored and enriched with wood floors, marble-tiled bathrooms, walk-in showers, and modern conveniences in 2017. Ideally located in downtown Batesville.

## SONSHINE CABIN (812) 756-2189

VRBO.COM/EN-CA/COTTAGE-RENTAL/P4919899

9075 S COUNTY ROAD 225W, MADISON, IN 47250 Situated on 15 acres, this cabin offers peace and quiet to visitors. Conveniently located off Hwy 421 near Versailles, Madison, and Friendship, IN. The cabin boasts 1800 sq. ft. of living space with 3 private bedrooms, a huge front porch with seating to watch the wildlife. A beautiful creek offers hours of fun for the kids.

## THE TANGLEWOOD 117 TYSON ST., VERSAILLES, IN 47042

THETANGLEWOODHOTEL.COM The Tanglewood offers modern hotel accommodations in a c.1870 Masonic Lodge on the square in Versailles, just a mile from Versailles State Park. Recently remodeled as a venue and hotel, the property is ideal for an individual overnight stay or to host a wedding, reunion, or event for up to 200 with on-premise hotel accommodations for guests. Park the car and enjoy being within walking distance to restaurants, retail shops, and a park with a splash pad and outdoor summer concerts.

## THOUSAND TRAILS INDIAN LAKES CABINS (812) 934-5496

THOUSANDTRAILS.COM/INDIANA/INDIAN-LAKES-RV-CAMPGROUND.

7234 STATE ROAD 46, BATESVILLE, IN 47006

Deluxe cabins, with kitchens and other amenities, await your stay just outside of Batesville. Enjoy swimming or fishing in the lake, games at the clubhouse, hiking, boat rental, and much more.

## THE INN AT WALHILL FARM (812) 934-2600

WWW.WALHILLFARM.COM/INN-WALHILL-FARM

857 SIX PINE RANCH RD • BATESVILLE, IN 47006 250-acre working farm with plenty of trees, perfect for a relaxing day outdoors. Woods, gardens, and animals. Four Equestrian-themed rooms, all including cable and WiFi.

# CAMPING

## BATESVILLE KOA CAMPGROUND

BATESVILLE • (812) 934-0296

## DELAWARE CAMPGROUND

MILAN • (812) 689-5818

## FRIENDSHIP ASSOCIATION FLEA MARKET CAMPSITES

(859) 341-9188 • WWW.FRIENDSHIPFLEAMARKET.COM

## HUDSON'S OLD MILL CAMPGROUND

FRIENDSHIP • (812) 667-5322

## RIPLEY COUNTY PARKS CAMPGROUND

(812) 689-6535 • WWW.RIPLEYCOUNTY.COM/PARKS

## VERSAILLES STATE PARK CAMPSITES

(866) 622-6746 • WWW.IN.GOV/DNR/PARKLAKE/2963.HTM

## WHELOCK LAKE CAMPGROUND

DILLSBORO • (812) 274-5423 • WWW.CAMPWHELOCK.COM





**RIPLEY COUNTY TOURISM BUREAU**

220 East U.S. 50 • P.O. Box 21

Versailles, IN 47042

*Find Your Adventure*

**IN INDIANA™**

[www.ripleycountytourism.com](http://www.ripleycountytourism.com)

(812) 689-7431

**NONPROFIT**  
U.S. Postage  
**PAID**  
Versailles, IN  
Permit #31